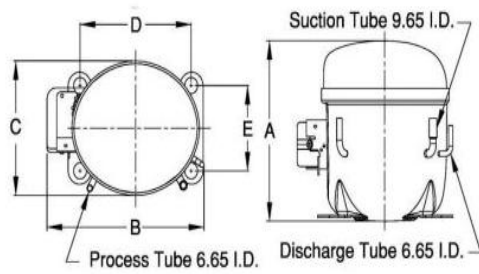


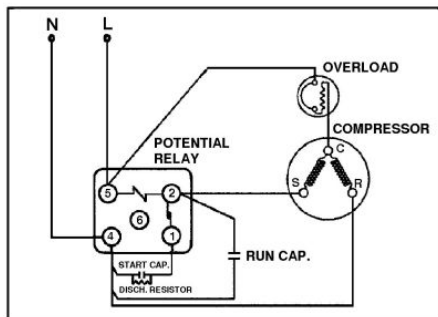


**PRINCIPAL DIMENSIONS - mm**



A: 215	B: 233	C: 160	D: 165	E: 102
--------	--------	--------	--------	--------

**SCHEMATIC WIRING DIAGRAM C.S.R.**

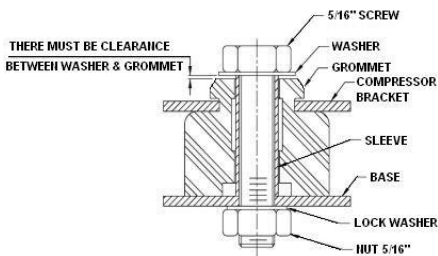


High Torque Start

**SCHEMATIC WIRING DIAGRAM -**

-

**MOUNTING KIT**



Electrical : 220-240 V/50 Hz. 1 Phase

**Nominal Performance**

Capacity	1,450 / - Watts
	4,947 / - BTU/Hr
	1,247 / - Kcal/Hr
Power Input	1,030 / - Watts
Locked Rotor Amps	25.10 / - Amps
Max Continuous Current	- / - Amps
Rated Load Amps	5.00 / - Amps
COP	1.41 / - Watts / Watts
EER	4.80 / - BTU/W-Hr

**Testing Conditions**

Condensing Temperature	54.40 °C	129.9 °F
Evaporating Temperature	-6.70 / - °C	19.9 / - °F
Liquid Temperature	46.10 °C	115.0 °F
Return Gas Temperature	35.00 °C	95.0 °F
Ambient Temperature	35.00 °C	95.0 °F

**Application**

Evaporating Temp. Range	MBP	@ -23.30 °C to -1.10 °C (-9.9° F to 30.0° F)
	Heat Pump	- °C to - °C (-° F to -° F)
Refrigerant	R404A	
Refrigerant Flow Control	Capillary Tube	
Compressor Cooling	Fan (460 CFM)	

**Compressor and Motor data**

Compressor Type	Reciprocating
Displacement	18.00 cc.
Oil Type	Polyolester Oil
Oil Charge	467 cc.
Motor Type	C.S.R. ; 2 Pole 2,850 / - r/m
Voltage Range	187-264/- Volts 50/- Hz.
Winding Resistance at 25 °C	
Start	8.26 Ohms
Run	2.75 Ohms
Weight with Oil	12.80 Kg.
Weight with Oil and Accessories	13.25 Kg.

**Electrical Components**

**Motor Protector**

Type	External 3/4"
Model Number	KME660-40/CD
Open / Close	115-125 / 78-60 °C
1st Cycle trip at 25 °C	19.50 Amps(main) - Amps(start)

**Motor Starter**

Type	Potential Relay
Model Number	KME692-2 (RVA6M6D)
Pick Up (max.)	239.00-268.00 Volts
Drop Out (min.)	60.00-135.00 Volts
Terminal Cover	KMD 901-12
Start Capacitor	43-52 µF 330 VAC.
Disch Resistor for Start Cap	15000 Ohms 2 W
Run Capacitor	20 µF 440 VAC.

**Mounting Kit**

Rubber Grommet	4007KGM905-2
Sleeve Grommet	4023KGM903-2
Washer	4023KEB387

Since we are constantly improving our product , the specification are subject to change without notice.

REV. DATE  
24-03-16

C / N No.  
0093/16

**Certificate Marks**

[www.alamko.by](http://www.alamko.by)



**COMPRESSOR PERFORMANCE TABLE**