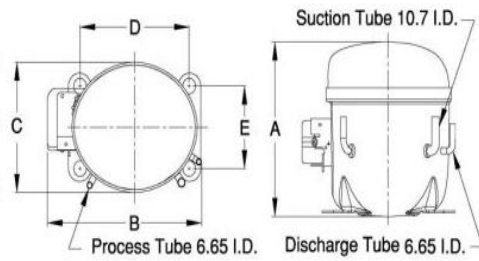


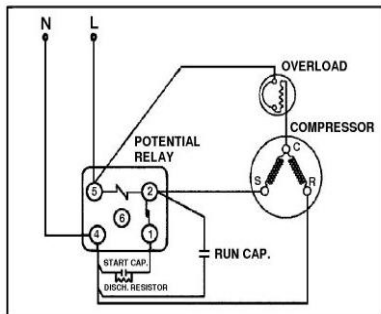


**PRINCIPAL DIMENSIONS - mm**



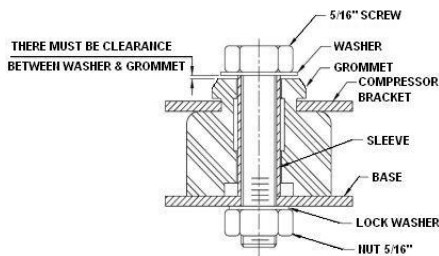
A: 215	B: 233	C: 160	D: 165	E: 102
--------	--------	--------	--------	--------

**SCHEMATIC WIRING DIAGRAM C.S.R.**



**SCHEMATIC WIRING DIAGRAM -**

**MOUNTING KIT**



Electrical : 220-240 V/50 Hz. 1 Phase

**Nominal Performance**

Capacity	1,670 / 2,825 Watts
	5,698 / 9,639 BTU/Hr
	1,436 / 2,429 Kcal/Hr
Power Input	1,265 / 1,552 Watts
Locked Rotor Amps	30.00 / 30.00 Amps
Max Continuous Current	- / - Amps
Rated Load Amps	7.60 / 8.60 Amps
COP	1.32 / 1.82 Watts / Watts
EER	4.50 / 6.21 BTU/W-Hr

**Testing Conditions**

Condensing Temperature	54.40 °C	129.9 °F
Evaporating Temperature	-6.70 / 7.20 °C	19.9 / 45.0 °F
Liquid Temperature	46.10 °C	115.0 °F
Return Gas Temperature	35.00 °C	95.0 °F
Ambient Temperature	35.00 °C	95.0 °F

**Application**

Evaporating Temp. Range	MBP/HBP	@ -23.30 °C to 12.70 °C (-9.9° F to 54.9° F)
	Heat Pump	- °C to - °C (-° F to -° F)
Refrigerant	R404A	
Refrigerant Flow Control	Capillary Tube	
Compressor Cooling	Fan (460 CFM)	

**Compressor and Motor data**

Compressor Type	Reciprocating
Displacement	20.00 cc.
Oil Type	Polyolester Oil
Oil Charge	457 cc.
Motor Type	C.S.R. ; 2 Pole 2,850 / 2,850 r/m
Voltage Range	187-264/- Volts 50/- Hz.
Winding Resistance at 25 °C	
Start	5.70 Ohms
Run	2.10 Ohms
Weight with Oil	13.00 Kg.
Weight with Oil and Accessories	13.40 Kg.

**Electrical Components**

<b>Motor Protector</b>	
Type	External 3/4"
Model Number	KME664-29/C
Open / Close	135-145 / 70-52 °C
1st Cycle trip at 25 °C	33.00 Amps(main) - Amps(start)
<b>Motor Starter</b>	
Type	Potential Relay
Model Number	KME692-2 (RVA6M6D)
Pick Up (max.)	239.00-268.00 Volts
Drop Out (min.)	60.00-135.00 Volts
Terminal Cover	KMD 901-12
Start Capacitor	88-106 µF 330 VAC.
Disch Resistor for Start Cap	15000 Ohms 2 W
Run Capacitor	20 µF 440 VAC.

**Mounting Kit**

Rubber Grommet	4007KGM905-2
Sleeve Grommet	3KGM903-Z
Washer	4023KEB387

Since we are constantly improving our product , the specification are subject to change without notice.

REV. DATE	C / N No.
27-04-15	0200/15

**Certificate Marks**

[www.alamko.by](http://www.alamko.by)

