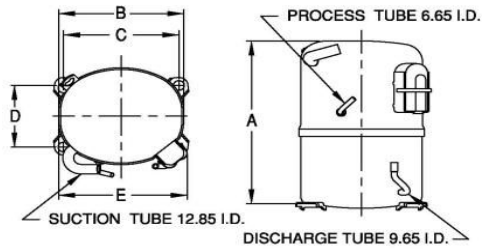


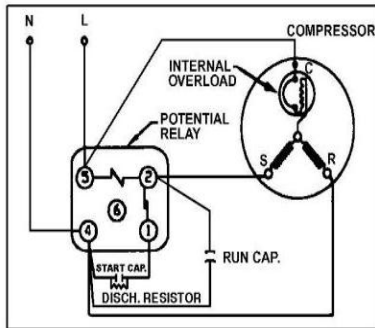


**PRINCIPAL DIMENSIONS - mm**



A: 264	B: 223	C: 203	D: 122	E: 239
--------	--------	--------	--------	--------

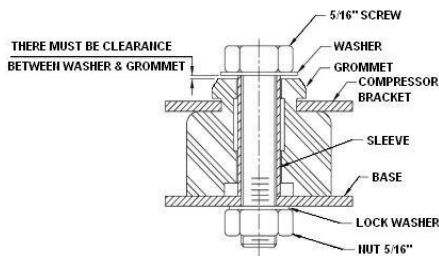
**SCHEMATIC WIRING DIAGRAM C.S.R.**



High Torque Start

**SCHEMATIC WIRING DIAGRAM -**

**MOUNTING KIT**



Electrical : 220-240 V/50 Hz. 1 Phase

**Nominal Performance**

Capacity	1,810 / 3,180 Watts
	6,176 / 10,850 BTU/Hr
	1,556 / 2,734 Kcal/Hr
Power Input	1,050 / 1,358 Watts
Locked Rotor Amps	23.20 / 23.20 Amps
Max Continuous Current	- / - Amps
Rated Load Amps	4.90 / 6.40 Amps
COP	1.72 / 2.34 Watts / Watts
EER	5.88 / 7.99 BTU/W-Hr

**Testing Conditions**

Condensing Temperature	54.40 °C	129.9 °F
Evaporating Temperature	-6.70 / 7.20 °C	19.9 / 45.0 °F
Liquid Temperature	46.10 °C	115.0 °F
Return Gas Temperature	35.00 °C	95.0 °F
Ambient Temperature	35.00 °C	95.0 °F

**Application**

Evaporating Temp. Range	MBP/HBP	@ -23.30 °C to 12.70 °C (-9.9° F to 54.9° F)
	Heat Pump	- °C to - °C (-° F to -° F)

Refrigerant	R404A
Refrigerant Flow Control	Capillary tube/Expansion valve
Compressor Cooling	Fan

**Compressor and Motor data**

Compressor Type	Reciprocating
Displacement	21.50 cc.
Oil Type	Polyolester Oil
Oil Charge	850 cc.
Motor Type	C.S.R. ; 2 Pole 2,850 / 2,850 r/m
Voltage Range	198-264/- Volts 50/- Hz.
Winding Resistance at 25 °C	
Start	4.59 Ohms
Run	2.65 Ohms
Weight with Oil	21.79 Kg.
Weight with Oil and Accessories	22.89 Kg.

**Electrical Components**

**Motor Protector**

Type	Internal Overload
Model Number	4042KGE656-6
Open / Close	105-115 / 58-80 °C
1st Cycle trip at 25 °C	37.00 Amps(main) 24.00 Amps(start)

**Motor Starter**

Type	Potential Relay
Model Number	4043KGE681-3 (RVA3H6D)
Pick Up (max.)	190.00-215.00 Volts
Drop Out (min.)	40.00-105.00 Volts
Terminal Cover	KGM 901-2
Start Capacitor	88-106 µF 330 VAC.
Disch Resistor for Start Cap	15000
Run Capacitor	20 µF 450 VAC.

**Mounting Kit**

Rubber Grommet	4007KGM905-2
Sleeve Grommet	4023KGM903-2
Washer	-

Since we are constantly improving our product , the specification are subject to change without notice.

REV. DATE  
16-05-16

C / N No.  
0145/16

**Certificate Marks**

[www.alamko.by](http://www.alamko.by)

