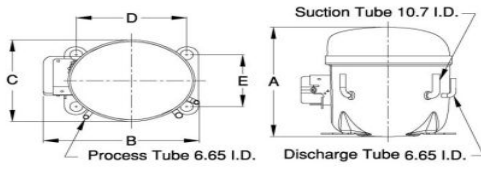


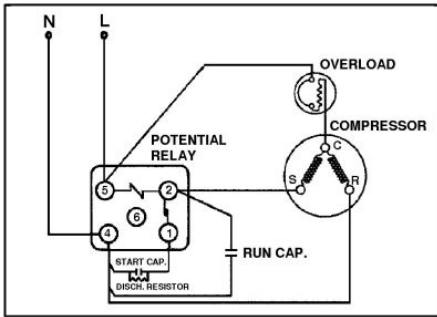


**PRINCIPAL DIMENSIONS - mm**



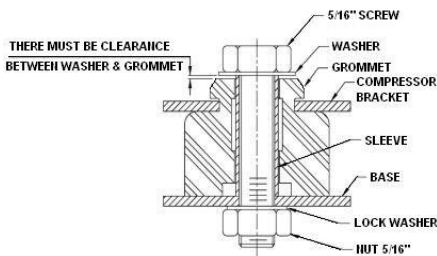
A: 215	B: 233	C: 160	D: 165	E: 102
--------	--------	--------	--------	--------

**SCHEMATIC WIRING DIAGRAM C.S.R.**



**SCHEMATIC WIRING DIAGRAM -**

**MOUNTING KIT**



Electrical : 220-240 V/50 Hz. 1 Phase

**Nominal Performance**

Capacity	925 / - Watts
	3,156 / - BTU/Hr
	795 / - Kcal/Hr
Power Input	740 / - Watts
Locked Rotor Amps	21.00 / - Amps
Max Continuous Current	- / - Amps
Rated Load Amps	4.20 / - Amps
COP	1.25 / - Watts / Watts
EER	4.27 / - BTU/W-Hr

**Testing Conditions**

Condensing Temperature	54.40 °C	129.9 °F
Evaporating Temperature	-23.30 / - °C	-9.9 / - °F
Liquid Temperature	32.20 °C	90.0 °F
Return Gas Temperature	32.20 °C	90.0 °F
Ambient Temperature	32.20 °C	90.0 °F

**Application**

Evaporating Temp. Range	LBP	@ -40.00 °C to -12.20 °C (-40.0° F to 10.0° F)
	Heat Pump	- °C to - °C (-° F to -° F)
Refrigerant	R404A	
Refrigerant Flow Control	Capillary Tube	
Compressor Cooling	Fan	

**Compressor and Motor data**

Compressor Type	Reciprocating
Displacement	20.00 cc.
Oil Type	Polyolester Oil
Oil Charge	457 cc.
Motor Type	C.S.R. ; 2 Pole 2,850 / - r/m
Voltage Range	187-264/- Volts 50/- Hz.
Winding Resistance at 25 °C	
Start	7.30 Ohms
Run	2.80 Ohms
Weight with Oil	13.14 Kg.
Weight with Oil and Accessories	13.79 Kg.

**Electrical Components**

<b>Motor Protector</b>	
Type	External 3/4"
Model Number	KME660-42/CD
Open / Close	115-125 / 78-60 °C
1st Cycle trip at 25 °C	21.00 Amps(main) - Amps(start)

<b>Motor Starter</b>	
Type	Potential Relay
Model Number	KME692-1
Pick Up (max.)	323.00-352.00 Volts
Drop Out (min.)	75.00-180.00 Volts
Terminal Cover	KMD 901-12
Start Capacitor	88-106 µF 330 VAC.
Disch Resistor for Start Cap	15000 Ohms 2 W
Run Capacitor	15 µF 440 VAC.

**Mounting Kit**

Rubber Grommet	4007KGM905-2
Sleeve Grommet	3KGM903-Z
Washer	4023KEB387

Since we are constantly improving our product , the specification are subject to change without notice.

REV. DATE	C / N No.
25-09-15	0404/15

**Certificate Marks**

[www.alamko.by](http://www.alamko.by)

