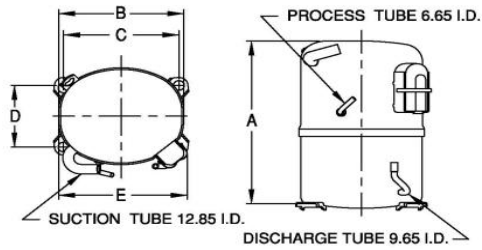


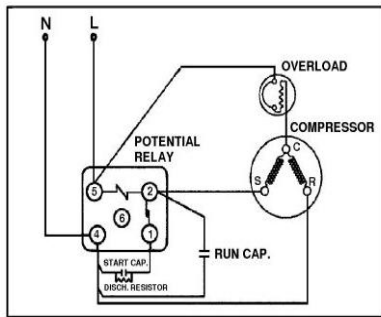


PRINCIPAL DIMENSIONS - mm



A: 264	B: 223	C: 203	D: 122	E: 239
--------	--------	--------	--------	--------

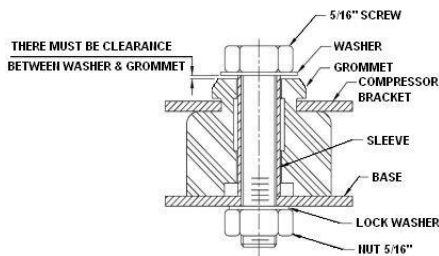
SCHEMATIC WIRING DIAGRAM C.S.R.



High Torque Start

SCHEMATIC WIRING DIAGRAM -

MOUNTING KIT



Electrical : 220-240 V/50 Hz. 1 Phase

Nominal Performance

Capacity	850 / - Watts
	2,900 / - BTU/Hr
	731 / - Kcal/Hr
Power Input	637 / - Watts
Locked Rotor Amps	30.00 / - Amps
Max Continuous Current	- / - Amps
Rated Load Amps	2.70 / - Amps
COP	1.33 / - Watts / Watts
EER	4.55 / - BTU/W-Hr

Testing Conditions

Condensing Temperature	54.40 °C	129.9 °F
Evaporating Temperature	-23.30 / - °C	-9.9 / - °F
Liquid Temperature	32.20 °C	90.0 °F
Return Gas Temperature	32.20 °C	90.0 °F
Ambient Temperature	32.20 °C	90.0 °F

Application

Evaporating Temp. Range	LBP	@ -35.00 °C to -12.20 °C (-31.0° F to 10.0° F)
	Heat Pump	- °C to - °C (-° F to -° F)
Refrigerant	R404A	
Refrigerant Flow Control	Capillary Tube	
Compressor Cooling	Fan	

Compressor and Motor data

Compressor Type	Reciprocating
Displacement	21.50 cc.
Oil Type	Polyolester Oil
Oil Charge	850 cc.
Motor Type	C.S.R. ; 2 Pole 2,850 / - r/m
Voltage Range	198-264/- Volts 50/- Hz.
Winding Resistance at 25 °C	
Start	6.22 Ohms
Run	2.95 Ohms
Weight with Oil	21.70 Kg.
Weight with Oil and Accessories	22.80 Kg.

Electrical Components

Motor Protector

Type	External Overload 3/4"
Model Number	3KME664-19/CASY
Open / Close	100-110 / 70-52 °C
1st Cycle trip at 25 °C	20.40 Amps(main) - Amps(start)

Motor Starter

Type	Potential Relay
Model Number	4043KGE681-3 (RVA3H6D)
Pick Up (max.)	190.00-215.00 Volts
Drop Out (min.)	40.00-105.00 Volts
Terminal Cover	KGM 901-1
Start Capacitor	108-130 µF 330 VAC.
Disch Resistor for Start Cap	15000 Ohms 2W
Run Capacitor	20 µF 425 VAC.

Mounting Kit

Rubber Grommet	4007KGM905-2
Sleeve Grommet	4023KGM903-2
Washer	-

Since we are constantly improving our product , the specification are subject to change without notice.

REV. DATE
01-04-14

C / N No.
0515/13

Certificate Marks

www.alamko.by



COMPRESSOR PERFORMANCE TABLE