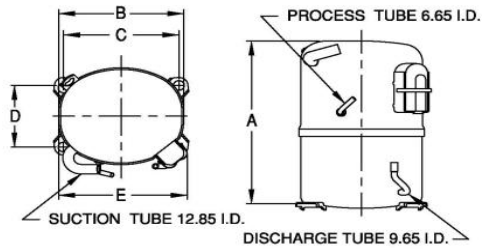


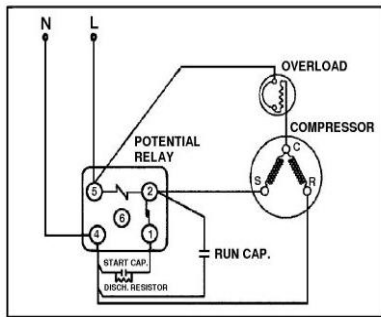


**PRINCIPAL DIMENSIONS - mm**



|        |        |        |        |        |
|--------|--------|--------|--------|--------|
| A: 264 | B: 223 | C: 203 | D: 122 | E: 239 |
|--------|--------|--------|--------|--------|

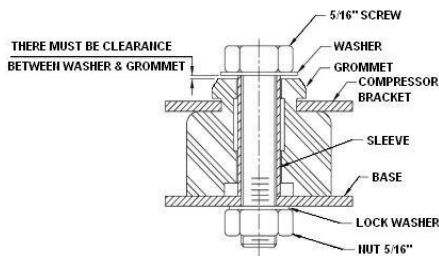
**SCHEMATIC WIRING DIAGRAM C.S.R.**



High Torque Start

**SCHEMATIC WIRING DIAGRAM -**

**MOUNTING KIT**



Electrical : 220-240 V/50 Hz. 1 Phase

**Nominal Performance**

|                        |                        |
|------------------------|------------------------|
| Capacity               | 1,600 / - Watts        |
|                        | 5,459 / - BTU/Hr       |
|                        | 1,376 / - Kcal/Hr      |
| Power Input            | 1,143 / - Watts        |
| Locked Rotor Amps      | 35.00 / - Amps         |
| Max Continuous Current | - / - Amps             |
| Rated Load Amps        | 5.50 / - Amps          |
| COP                    | 1.40 / - Watts / Watts |
| EER                    | 4.78 / - BTU/W-Hr      |

**Testing Conditions**

|                         |               |             |
|-------------------------|---------------|-------------|
| Condensing Temperature  | 54.40 °C      | 129.9 °F    |
| Evaporating Temperature | -23.30 / - °C | -9.9 / - °F |
| Liquid Temperature      | 32.20 °C      | 90.0 °F     |
| Return Gas Temperature  | 32.20 °C      | 90.0 °F     |
| Ambient Temperature     | 32.20 °C      | 90.0 °F     |

**Application**

|                          |                |   |
|--------------------------|----------------|---|
| Evaporating Temp. Range  | LBP            | @ -35.00 ° C to -10.00 ° C<br>(-31.0° F to 14.0° F) |
|                          | Heat Pump      | - ° C to - ° C<br>(-° F to -° F)                    |
| Refrigerant              | R404A          |   |
| Refrigerant Flow Control | Capillary Tube |   |
| Compressor Cooling       | Fan            |   |

**Compressor and Motor data**

|                                 |                               |
|---------------------------------|-------------------------------|
| Compressor Type                 | Reciprocating                 |
| Displacement                    | 34.50 cc.                     |
| Oil Type                        | Polyolester Oil               |
| Oil Charge                      | 850 cc.                       |
| Motor Type                      | C.S.R. ; 2 Pole 2,850 / - r/m |
| Voltage Range                   | 198-264/- Volts 50/- Hz.      |
| Winding Resistance at 25 ° C    |                               |
| Start                           | 3.63 Ohms                     |
| Run                             | 1.82 Ohms                     |
| Weight with Oil                 | 28.20 Kg.                     |
| Weight with Oil and Accessories | 29.04 Kg.                     |

**Electrical Components**

**Motor Protector**

|                          |                                |
|--------------------------|--------------------------------|
| Type                     | External Overload 3/4"         |
| Model Number             | 3KME664-29/CASY                |
| Open / Close             | 135-145 / 70-52 ° C            |
| 1st Cycle trip at 25 ° C | 33.00 Amps(main) - Amps(start) |

**Motor Starter**

|                              |                        |
|------------------------------|------------------------|
| Type                         | Potential Relay        |
| Model Number                 | 4043KGE681-3 (RVA3H6D) |
| Pick Up (max.)               | 190.00-215.00 Volts    |
| Drop Out (min.)              | 40.00-105.00 Volts     |
| Terminal Cover               | KGM 901-1              |
| Start Capacitor              | 145-174 µF 330 VAC.    |
| Disch Resistor for Start Cap | 15000 Ohms 2 W         |
| Run Capacitor                | 30 µF 425 VAC.         |

**Mounting Kit**

|                |              |
|----------------|--------------|
| Rubber Grommet | 4007KGM905-2 |
| Sleeve Grommet | 4023KGM903-2 |
| Washer         | -            |

Since we are constantly improving our product , the specification are subject to change without notice.

|           |           |
|-----------|-----------|
| REV. DATE | C / N No. |
| 01-04-14  | 0515/13   |

**Certificate Marks**

[www.alamko.by](http://www.alamko.by)

